

Sloan Meeting on microbiology of the built environment #microBEnet

300 Items

Details about the meeting:




Conference on the Microbiology of the Built Environment

Conference on the Microbiology of the Built Environment

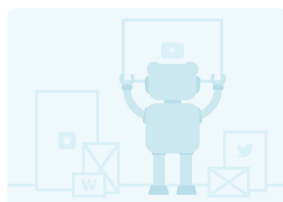
The Alfred P. Sloan Foundation is funding an emerging field of scientific inquiry: the microbiology of the built environment . Our homes and workplaces, hospitals and schools are quite literally...



Microbiology of the Built Environment Conference in Boulder reminder (invite only)

 microBEnet: the microbiology of the Built Environment network

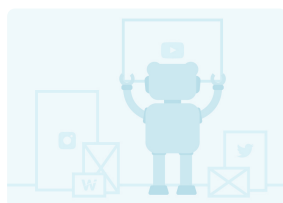
The Alfred P. Sloan Foundation and the University of Colorado are pleased to announce the inaugural conference on the Microbiology of the Built Environment, taking place May 31 and...



Conference Program

Conference on the Microbiology of the Built Environment

[Click here to see the 2016 Conference Program](#)



program/10

www.sloan.org

Some posts from people on the way



Jason Stajich
@hyphaltip



About to embark on 24hrs in Boulder,CO for
[#microbenet](#) hope my students appreciate that I am
cutting my trip short so I can teach on Fri.

♡ 6:15 PM - May 30, 2012



[See Jason Stajich's other Tweets](#)



Jonathan Eisen
@phylogenomics



Of to Boulder for gathering of Sloan Foundation's
"microbiology of the built environment" program
[#microbenet](#)

♡ 8:10 PM - May 30, 2012



[See Jonathan Eisen's other Tweets](#)



Dinner the first night



Jason Stajich

@hyphaltip



Discussing mobedac plans for the coming year & how make the tools more useful w [@phylogenomics](#) & R Knight [#microbenet](#)

♡ 1:26 AM - May 31, 2012

[See Jason Stajich's other Tweets](#)



Jonathan Eisen ✓

@phylogenomics

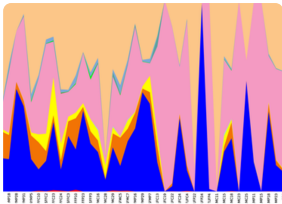


New [#microBEnet](#) blog post:: The hidden diversity of offices - what microbes are lurking there? [#PLoSOne](#) microbe.net/2012/05/31/the...

♡ 1 4:05 AM - May 31, 2012

[See Jonathan Eisen's other Tweets](#)





The hidden diversity of offices - what microbes are lurking there? #PLOSOne

 microBENet: the microbiology of the Built Environment network

A new paper from Scott Kelley is out: PLoS ONE: Office Space Bacterial Abundance and Diversity in Three Metropolitan Areas. This work was supported in part by the Sloan Foundation's...



Patti Giglio
@psgcom

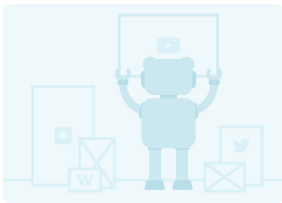


Men prove germ magnets at the office huff.to/KsUu1Y
#microbenet @sloanfoundation program Microbiology of the Built Environment

♥ 11:28 AM - May 31, 2012



 [See Patti Giglio's other Tweets](#)



Office Bacteria Rampant, More Concentrated In Men's Areas Than Women: Study

HuffPost Canada

TORONTO - Offices are rife with bacteria, and not just in the washrooms, a new study suggests. Scientists who set out to see how much and what kinds of bacteria are found in offices...



Patti Giglio
@psgcom



Report Details Efforts To Improve, Advance Indoor Microbial Sampling soc.li/iV8X0FJ #microbenet

♥ 11:37 AM - May 31, 2012



 [See Patti Giglio's other Tweets](#)



Report Details Efforts To Improve, Advance Indoor Microbial Sampling - Redorbit

Redorbit

Humans spend greater than 90 percent of their time indoors, but we're never alone there. Bacteria and viruses, scientists estimate, make up half of the world's biomass-some 10 nonillion (1 followe...

Start of the meeting



JP Maestre 🇺🇸
@yeipijotape



At the Conference on the Microbiology of the Built Environment, Boulder, Co. #microbenet,

♡ 5:53 AM - May 31, 2012



[See JP Maestre 🇺🇸's other Tweets](#)



JP Maestre 🇺🇸
@yeipijotape



Starting #microbenet

♡ 3:00 PM - May 31, 2012



[See JP Maestre 🇺🇸's other Tweets](#)



Patti Giglio
@psgcom



#microbenet @sloanfoundation's Olsiewski says launching a new field requires a community. How do we get there? @phylogenomics

♡ 3:00 PM - May 31, 2012 · Boulder, CO



[See Patti Giglio's other Tweets](#)



Patti Giglio
@psgcom



Corsi: buildings are heterogeneous systems; connections matter #microbenet we must decide what 2 study in the indoor enviro. Agree?

♡ 3:21 PM - May 31, 2012 · Boulder, CO



[See Patti Giglio's other Tweets](#)



JP Maestre 🇺🇸
@yeipijotape



#microbenet Corsi: Need to incorporate microbiology knowledge to design better bdgs, Desing improvements.

♡ 3:35 PM - May 31, 2012



[See JP Maestre 🇺🇸's other Tweets](#)





JP Maestre 🇺🇸
@yeipijotape



[#microbenet](#): One more scientific group should be involved: Health folks

♡ 3:36 PM - May 31, 2012



[See JP Maestre 🇺🇸's other Tweets](#)



JP Maestre 🇺🇸
@yeipijotape



[#microbenet](#): The University of Oregon, Center for Biology and the Built Environment, Jessica Green.

♡ 3:39 PM - May 31, 2012



[See JP Maestre 🇺🇸's other Tweets](#)



Jason Stajich
@hyphaltip



Sustainable building & understanding of the built environment- BioBE Center @ U Oregon -
[@JessicaLeeGreen](#) introducing projects. [#microbenet](#)

♡ 3:42 PM - May 31, 2012



[See Jason Stajich's other Tweets](#)



Patti Giglio
@psgcom



[@JessicaLeeGreen](#) speaking at [#microbenet](#) discusses Potential of new field to create sustainable built environments.

♡ 3:42 PM - May 31, 2012 · Boulder, CO



[See Patti Giglio's other Tweets](#)



JP Maestre 🇺🇸
@yeipijotape



[#microbenet](#) U Oregon Rooms that are physically connected have similar microbial community.

♡ 3:56 PM - May 31, 2012



[See JP Maestre 🇺🇸's other Tweets](#)





Patti Giglio

@psgcom



When researchers sample dust is it really like being an archeologist? Gives me a whole new view on chores

[#microbenet](#) [#iamscience](#)

♡ 3:58 PM - May 31, 2012 · Boulder, CO



[See Patti Giglio's other Tweets](#)



Jason Stajich

@hyphaltip



JG: Need tools include low cost sensors with open source architecture to collect density and types of microbes in indoor env. [#microbenet](#)

♡ 4:07 PM - May 31, 2012



[See Jason Stajich's other Tweets](#)



JP Maestre 🇪🇸

@yeipijotape



[#microbenet](#) How are we going to call this new field?

♡ 4:10 PM - May 31, 2012



[See JP Maestre 🇪🇸's other Tweets](#)





Jonathan Eisen 
@phylogenomics



Wow - very large crowd at the Sloan Foundation microbiology of the built environment meeting
[#microbenet](#)

♡ 4:13 PM - May 31, 2012

 [See Jonathan Eisen's other Tweets](#)



Patti Giglio
@psgcom



[@JessicaLeeGreen](#) say understanding the human health impact of indoor ecology requires collaboration
[#microbenet](#)

♡ 4:15 PM - May 31, 2012 · Boulder, CO

 [See Patti Giglio's other Tweets](#)





Jonathan Eisen  @phylogenomics · May 31, 2012



Wow - very large crowd at the Sloan Foundation microbiology of the built environment meeting
[#microbenet](#)



Patti Giglio

@psgcom

[@phylogenomics](#) 104 registered! [#microbenet](#)

♡ 4:19 PM - May 31, 2012 · Boulder, CO



 [See Patti Giglio's other Tweets](#)



Jonathan Eisen 

@phylogenomics



Now up at the Sloan Microbiology of the Built Environment meeting [#microBEnet](#) the team from "BiMERC" microbe.net/berkeley-indoo...

♡ 4:20 PM - May 31, 2012



 [See Jonathan Eisen's other Tweets](#)



Jonathan Eisen 

@phylogenomics



BiMERC team is looking at particle and bioaerosol dynamics indoors including microbial surveys microbe.net/berkeley-indoo... [#microBEnet](#)

♡ 4:22 PM - May 31, 2012




 [See Jonathan Eisen's other Tweets](#)





Berkeley Indoor Microbial Ecology Research Consortium (BIMERC)

 microBEnet: the microbiology of the Built Environment network

While microorganisms are found on surfaces, in the air, and throughout the water systems of buildings, the air is likely the most important medium for dissemination. The BIMERC group i...



Jessica Green

@JessicaLeeGreen



#microbenet BioBE Center sees great potential for biological data to inform the design and physical manifestation of buildings.

♡ 4:24 PM - May 31, 2012



 [See Jessica Green's other Tweets](#)



Jonathan Eisen 

@phylogenomics



Microbiology of the built environment studies are spreading like microbes see [microbe.net](#) for more detail #microBEnet


♡ 4:24 PM - May 31, 2012



 [See Jonathan Eisen's other Tweets](#)



microBEnet: the microbiology of the Built Environment network

 microBEnet: the microbiology of the Built Environment network

At the interface of microbial ecology and building science.



Jessica Green

@JessicaLeeGreen



#microbenet BioBE Center [biobe.uoregon.edu](#) asks: are there 'general laws' in building ecology?

♡ 4:26 PM - May 31, 2012



 [See Jessica Green's other Tweets](#)





BioBE

 BioBE

Written by Dr. Rich Corsi, edited by Sue Ishaq and Jeff Kline. Several months ago, I connected with Dr. Kevin van Den Wymelenberg at the University of Oregon about the interaction...



Jessica Green

@JessicaLeeGreen



[#microbenet](#) BiMERC team finds that particle size spectra varies significantly throughout day in classrooms.

♡ 4:29 PM - May 31, 2012



 [See Jessica Green's other Tweets](#)



Jonathan Eisen  @phylogenomics · May 31, 2012



Replying to @artologica

[@artologica](#) I think it is going to take me a while to count them



Michele Banks

@artologica

[@phylogenomics](#) I bet they look like this etsy.com/listing/101060... [#microbenet](#) [#shameless](#)

♡ 4:30 PM - May 31, 2012



 [See Michele Banks's other Tweets](#)





Patti Giglio
@psgcom



Can we standardize methods? What are the challenges?
[#microbenet](#)

♡ 4:30 PM - May 31, 2012 · Boulder, CO



[See Patti Giglio's other Tweets](#)



Jessica Green
@JessicaLeeGreen



[#microbenet](#) BiMERC shows indoor air particle size peaks
at ~5 micrometers (if I'm reading graph correctly).

♡ 4:32 PM - May 31, 2012



[See Jessica Green's other Tweets](#)





Jonathan Eisen 
@phylogenomics

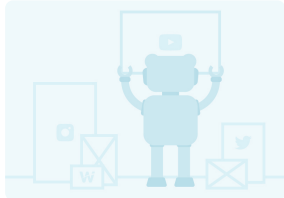


To learn more about research on Microbiology of the Built Environment check out this Mendeley Collection
[#microBEnet shar.es/qZB8q](#)

♡ 4 4:32 PM - May 31, 2012



 [See Jonathan Eisen's other Tweets](#)



State not found Error

 Elsevier



Jessica Green
@JessicaLeeGreen



[#microbenet](#) BiMERC again seeing the majority of particles indoors peaks between 3-6 microns. What are there particles? Skin cells?

♡ 4:34 PM - May 31, 2012



 [See Jessica Green's other Tweets](#)



Noah Fierer
@NoahFierer



You release 8 million 'particles' from your body into the indoor environment per hour [#microBEnet](#)

♡ 4:35 PM - May 31, 2012



 [See Noah Fierer's other Tweets](#)



Jessica Green
@JessicaLeeGreen



[#microbenet](#) BiMERC finds that particle size spectra for bacteria & fungi-associated aerosols are similar. This surprises me.

♡ 4:35 PM - May 31, 2012



 [See Jessica Green's other Tweets](#)





Jessica Green
@JessicaLeeGreen



[#microbenet](#) BiMERC finds that occupancy and rate of humans coming/going to rooms impacts bioaerosol emissions.

♡ 4:37 PM - May 31, 2012



[See Jessica Green's other Tweets](#)



Jessica Green
@JessicaLeeGreen



[#microbenet](#) BiMERC samples dust in UC Berkeley's University Village - a place I am very intimate with from grad school.

♡ 4:42 PM - May 31, 2012



[See Jessica Green's other Tweets](#)



Jonathan Eisen ✓
@phylogenomics



BIMERC group has been doing some really cool sampling of microbial communities using hanging petri dishes around buildings [#microBEnet](#)

♡ 4:43 PM - May 31, 2012



[See Jonathan Eisen's other Tweets](#)



Jonathan Eisen ✓
@phylogenomics



Lesson of the day at [#microBEnet](#) meeting QIIME [qiime.org](#) is awesome

♡ 4:45 PM - May 31, 2012



[See Jonathan Eisen's other Tweets](#)



QIIME

Qiime

QIIME is an open-source bioinformatics pipeline for performing microbiome analysis from raw DNA sequencing data. QIIME is designed to take users from raw sequencing data generated on...



Jessica Green
@JessicaLeeGreen



Common (and intuitive) pattern based on data shown at [#microbenet](#) - season and room matter for microbial community composition.

♡ 4:47 PM - May 31, 2012



[See Jessica Green's other Tweets](#)



Jonathan Eisen ✓
@phylogenomics



Bummed I missed presentations from the BioBE center team (e.g. [@JessicaLeeGreen](#)) this AM at [#microBEnet](#) meeting - alarm did not go off ;-(

♡ 4:47 PM - May 31, 2012



[See Jonathan Eisen's other Tweets](#)



Jessica Green
@JessicaLeeGreen



BiMERC: Cryptococcus are cosmopolitan fungi.
[#microbenet](#)

♡ 4:48 PM - May 31, 2012



[See Jessica Green's other Tweets](#)



Jonathan Eisen ✓
@phylogenomics



Another key site to check out if interested in microbes in our indoor world: biobe.uoregon.edu run by [@JessicaLeeGreen](#) [#microBEnet](#)

♡ 1 4:48 PM - May 31, 2012



[See Jonathan Eisen's other Tweets](#)



Jessica Green
@JessicaLeeGreen



Bruns lab suggest the Petri dish effective way to sample airborne fungi. I love it. Will this pattern hold for other microbes? [#microbenet](#)

♡ 4:50 PM - May 31, 2012



[See Jessica Green's other Tweets](#)





Jessica Green
@JessicaLeeGreen



BiMERC sampling dwellings in San Francisco. Will this be a study of posh places? [#microbenet](#)

♡ 4:52 PM - May 31, 2012



[See Jessica Green's other Tweets](#)



Jessica Green
@JessicaLeeGreen



More questions posed by BioBE Center: How are the built environment and human health related? [#microbenet](#)

♡ 4:54 PM - May 31, 2012



[See Jessica Green's other Tweets](#)



Jessica Green
@JessicaLeeGreen



Questions posed by BioBE Center: How are microbes exchanged among buildings, air and people?
[#microbenet](#)

♡ 4:54 PM - May 31, 2012



[See Jessica Green's other Tweets](#)



Jessica Green
@JessicaLeeGreen



Questions posed by BioBE Center: How will we design real-time, affordable, open source biosensors?
[#microbenet](#)

♡ 4:55 PM - May 31, 2012



[See Jessica Green's other Tweets](#)



Jessica Green
@JessicaLeeGreen



Questions posed by BioBE Center: What are the best ways to visualize microbial dynamics in the built environment? [#microbenet](#)

♡ 4:55 PM - May 31, 2012



[See Jessica Green's other Tweets](#)





Jessica Green
@JessicaLeeGreen



I love that BiMERC is discussing source-sink dynamics = classic metacommunity theory language [#microbenet](#)

♡ 4:57 PM - May 31, 2012



[See Jessica Green's other Tweets](#)



Jonathan Eisen ✓
@phylogenomics



W. Bahnfleth [#microBEnet](#) opens w/ "It aint ignorance that causes so much trouble; it's folks knowing so much that ain't so"- Josh Billings

♡ 5:28 PM - May 31, 2012



[See Jonathan Eisen's other Tweets](#)



Jonathan Eisen ✓
@phylogenomics



W. Bahnfleth at [#microBEnet](#) meeting discussing ventilation as a way of regulating how much one sits in one's own "bioeffluent"

♡ 5:32 PM - May 31, 2012



[See Jonathan Eisen's other Tweets](#)



Noah Fierer
@NoahFierer



[#microBEnet](#) Relationship between ventilation rate and perceived air quality measured by "letting people sit in their own bio-effluent"

♡ 5:32 PM - May 31, 2012



[See Noah Fierer's other Tweets](#)



Jessica Green
@JessicaLeeGreen



Banfleth: Productivity is correlated with ventilation rate. [#microbenet](#)

♡ 5:33 PM - May 31, 2012



[See Jessica Green's other Tweets](#)





Noah Fierer
@NoahFierer



#microBEnet "What if the safety, health, and welfare of the public depends on things outside the competence of the architect and engineer?"

♡ 5:34 PM - May 31, 2012



[See Noah Fierer's other Tweets](#)



Jessica Green
@JessicaLeeGreen



Banfleth's question on the ethics of building design makes me think about the ethics of how we impact ALL environments. #microbenet

♡ 5:37 PM - May 31, 2012



[See Jessica Green's other Tweets](#)



Jessica Green
@JessicaLeeGreen



Banfleth celebrates Fisk's work - someone I have never met but who has influenced our work at the BioBE Center. #microbenet

♡ 5:39 PM - May 31, 2012



[See Jessica Green's other Tweets](#)



Patti Giglio
@psgcom



Banfelrh #microBEnet need more than description of indoor environ; need effective interventions; impact on health-productivity; econ analyses

♡ 5:40 PM - May 31, 2012 · Boulder, CO



[See Patti Giglio's other Tweets](#)



Jessica Green
@JessicaLeeGreen



WOW. Banfleth shows a correlation between employee salary and ventilation rate. Relates to BioBE Center interests in slums. #microbenet.

♡ 5:42 PM - May 31, 2012



[See Jessica Green's other Tweets](#)





Jessica Green
@JessicaLeeGreen



Banfleth shows filter: "Good germs, bad germs, I don't think they are supposed to be there". A human- not microbe-centric view. [#microbenet](#)

♡ 5:45 PM - May 31, 2012



[See Jessica Green's other Tweets](#)



Patti Giglio @psgcom · May 31, 2012



Banfelrh [#microBEnet](#) need more than description of indoor environ; need effective interventions; impact on health-productivity; econ analyses



Patti Giglio
@psgcom

[@psgcom](#) [@phylogenomics](#) [@JessicaLeeGreen](#) people seem invigorated looking forward to the convo [#microbenet](#)

♡ 5:45 PM - May 31, 2012 · Boulder, CO



[See Patti Giglio's other Tweets](#)



Jessica Green
@JessicaLeeGreen



Whoopee - now we get to discuss in breakout groups to share ideas at crobiologybuiltenvironment.weebly.com/index.html [#microbenet](#)

♡ 5:46 PM - May 31, 2012



[See Jessica Green's other Tweets](#)



Jessica Green
@JessicaLeeGreen



Oh my. American Institutes for Research have social scientists to work with and study (?) us here crobiologybuiltenvironment.weebly.com/index.html [#microbenet](#)

♡ 5:48 PM - May 31, 2012



[See Jessica Green's other Tweets](#)





Noah Fierer
@NoahFierer



#microBEnet It makes me a little nervous to be studied by social scientists. Don't want to know what they'll find.....

♡ 5:49 PM - May 31, 2012



[See Noah Fierer's other Tweets](#)



Noah Fierer
@NoahFierer



#microBEnet Can you distinguish between building scientists and biologists based on fashion sense (or lack thereof)?

♡ 5:50 PM - May 31, 2012



[See Noah Fierer's other Tweets](#)



Jonathan Eisen 
@phylogenomics



Interesting - now up at #microBEnet - social scientists are studying us and how we interact in our discussions
#cool #strange

♡ 5:51 PM - May 31, 2012



[See Jonathan Eisen's other Tweets](#)





JP Maestre 🇺🇸
@yeipijotape



#microbenet really sophisticated method

♡ 7:31 PM - May 31, 2012

👤 See JP Maestre 🇺🇸's other Tweets





Jonathan Eisen ✓
@phylogenomics



Seen on floor at #microbenet meeting - #PLOS

♡ 1 7:44 PM - May 31, 2012

[See Jonathan Eisen's other Tweets](#)





Jonathan Eisen ✓

@phylogenomics



Assigned seating at the [#microbenet](#) lunch - forcing new interactions ...

♡ 1 7:46 PM - May 31, 2012



[See Jonathan Eisen's other Tweets](#)



Jonathan Eisen ✓

@phylogenomics



Rob Knight now up at the [#microBEnet](#) meeting - shows zoo cage as says "only a tiny fraction of microbes can live in captivity"

♡ 2 7:47 PM - May 31, 2012



[See Jonathan Eisen's other Tweets](#)





Jessica Green
@JessicaLeeGreen

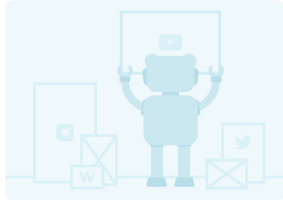


Next up is at Conference on Microbiology of Built Environment is Rob Knight introducing MoBeDAC mobedac.org #microbenet

♡ 7:48 PM - May 31, 2012



[See Jessica Green's other Tweets](#)



Unknown

mobedac.org



Jonathan Eisen ✓
@phylogenomics



Rob Knight discussing the challenges of BLAST analysis of sequences and the need for phylogenetic trees instead #WooHoo #microBEnet

♡ 2 7:49 PM - May 31, 2012



[See Jonathan Eisen's other Tweets](#)



Jessica Green
@JessicaLeeGreen



So great to see female leadership in engineering and seeing Shelly Miller stripe.colorado.edu/~shellym/CU_Bo... #microbenet

♡ 7:52 PM - May 31, 2012



[See Jessica Green's other Tweets](#)



About Me

 Shelly L. Miller

I am a Professor of Mechanical Engineering at the University of Colorado Boulder. I am also a faculty member of the interdisciplinary Environmental Engineering Program at CU. Here i...



Jonathan Eisen 
@phylogenomics



Knight discussing this wonderful paper of his on "Moving pictures of the human microbiome"

genomebiology.com/2011/12/5/R50 #microBEnet

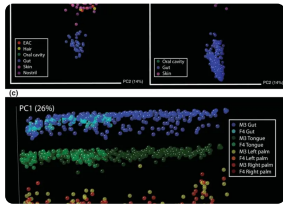
♥ 8:00 PM - May 31, 2012



Moving pictures of the human micro...

Understanding the normal temporal variation in the human microbiome is critical to developing treatments for genomebiology.biomedcentral.com

 See Jonathan Eisen's other Tweets



Moving pictures of the human microbiome

 Genome Biology

Understanding the normal temporal variation in the human microbiome is critical to developing treatments for putative microbiome-related afflictions such as obesity, Crohn's disease,...



Jonathan Eisen 
@phylogenomics



Knight discusses their cool "sitepainter" tool for plotting rRNA data spatially

bioinformatics.oxfordjournals.org/content/early/...

#microBEnet

♥ 3 8:01 PM - May 31, 2012



 See Jonathan Eisen's other Tweets



SitePainter: a tool for exploring biogeographical patterns | Bioinformatics ...

 OUP Academic

As microbial ecologists take advantage of high-throughput analytical techniques to describe microbial communities across ever-increasing numbers of samples, the need for new analysis...



Jessica Green
@JessicaLeeGreen



Knight is unfolding new MoBeDAC tools - analysis running in the background - can't wait to see what pops up.

[#microbenet](#)

♥ 8:05 PM - May 31, 2012



[See Jessica Green's other Tweets](#)



Jonathan Eisen ✓
@phylogenomics



Knight refs. J.Davies "Once the diversity of microbial world is catalogued, it will make astronomy look like a pitiful science" [#microBEnet](#)

♥ 8:06 PM - May 31, 2012



[See Jonathan Eisen's other Tweets](#)



Mariam R. Rizkallah
@mrrizkallah



Following [#microBEnet](#) and [@phylogenomics](#) ! Nonstop paradigm shifts going on at this meeting!

♥ 2 8:08 PM - May 31, 2012



[See Mariam R. Rizkallah's other Tweets](#)



Jonathan Eisen ✓
@phylogenomics



Knight discussing Sourcetracker for identifying possible sources for specific microbial communities

[sourceforge.net/projects/sourc...](#) [#microBEnet](#)

♥ 3 8:09 PM - May 31, 2012



[See Jonathan Eisen's other Tweets](#)



SourceTracker

 SourceForge

Download SourceTracker for free. As of April 18, 2015, SourceTracker has moved to github.com. New releases can be found at this URL:...



Jessica Green
@JessicaLeeGreen

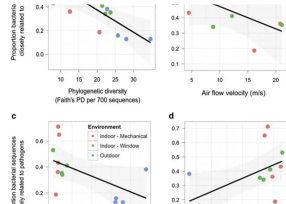


Knight folded BioBE Center's hospital air data
nature.com/ismej/journal/... into visualization tool
relating air is to human microbiome. [#microbenet](#)

♡ 1 8:15 PM - May 31, 2012



[See Jessica Green's other Tweets](#)



Architectural design influences the diversity and structure of the built environment...

The ISME Journal

Altmetric: 104 Citations: 128 More detail Original Article | Open
Microbial Population and Community Ecology The ISME Journal
(2012) 6, 1469-1479 (2012) doi:10.1038/ismej.2011.211 Downlo...



Patti Giglio
@psgcom



[#microbenet](#) interesting use of data visualization from
MoBeDac.org What kinds of resources does the
community need?

♡ 1 8:16 PM - May 31, 2012 · Boulder, CO



[See Patti Giglio's other Tweets](#)



Jessica Green
@JessicaLeeGreen



[@phylogenomics](#) Jonathan asks Knight: what are rate
limiting steps to use of MoBeDac tools? [#microbenet](#)

♡ 1 8:20 PM - May 31, 2012



[See Jessica Green's other Tweets](#)



Jessica Green
@JessicaLeeGreen



Knight responds: metadata curation & data
interpretation [#microbenet](#)

♡ 8:22 PM - May 31, 2012



[See Jessica Green's other Tweets](#)





Jessica Green
@JessicaLeeGreen



Just learned about way to sample outdoor airs using a "wetted-wall cyclone". I want one. [#microbenet](#)

♡ 8:36 PM - May 31, 2012



[See Jessica Green's other Tweets](#)



Jonathan Eisen ✓
@phylogenomics



The hidden diversity of offices - what microbes are lurking there? [#PLoSOne](#) paper related to [#microBEnet](#) meeting shar.es/qwdkf

♡ 8:37 PM - May 31, 2012



[See Jonathan Eisen's other Tweets](#)



Jessica Green
@JessicaLeeGreen



While searching for info on the ASHRAE retail stores project found this awesome site of Joshua Rhodes' [sites.google.com/site/joshdr83/...](http://sites.google.com/site/joshdr83/) [#microbenet](#)

♡ 8:44 PM - May 31, 2012



[See Jessica Green's other Tweets](#)



Joshua Rhodes' Academic Webpage

 Google

The academic webpage of Joshua Rhodes - The University of Texas at Austin.



Jessica Green
@JessicaLeeGreen



I love the Peccia lab eng.yale.edu/peccialab/ drawings of humans shedding and kicking up microbes indoors. [#microbenet](#)

♡ 8:46 PM - May 31, 2012



[See Jessica Green's other Tweets](#)





Peccia Lab Front | Jordan Peccia Lab @ Yale University

Yale

website.



Jonathan Eisen ✓

@phylogenomics



Denina Hospodsky from Jordan Peccia's lab up at [#microBEnet](#) - says sampling classrooms in China was eyeopening [#VeryDenseOccupancy](#)

♥ 8:47 PM - May 31, 2012



[See Jonathan Eisen's other Tweets](#)



Jessica Green

@JessicaLeeGreen



Peccia lab (sorry missed name of awesome speaker): Size-spectra information is crucial because we can link physics & biology. [#microbenet](#)

♥ 8:48 PM - May 31, 2012



[See Jessica Green's other Tweets](#)



Jessica Green

@JessicaLeeGreen



Denina Hospodsky: particles size drives bioaerosol transport. I wonder - what else does? Surface (i.e. protein) properties? [#microbenet](#)

♥ 8:50 PM - May 31, 2012



[See Jessica Green's other Tweets](#)



Jonathan Eisen ✓

@phylogenomics



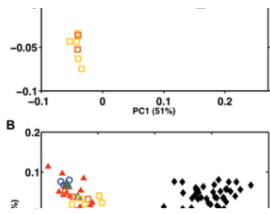
Hospodsky discussing this paper of here: [#PLoSOne](#): Human Occupancy as a Source of Indoor Airborne Bacteria [#microBEnet](#) dx.plos.org/10.1371/journal.pone.0171111

♥ 8:50 PM - May 31, 2012



[See Jonathan Eisen's other Tweets](#)





Human Occupancy as a Source of Indoor Airborne Bacteria

Plos

Exposure to specific airborne bacteria indoors is linked to infectious and noninfectious adverse health outcomes. However, the sources and origins of bacteria suspended in indoor air are n...



Jessica Green
@JessicaLeeGreen

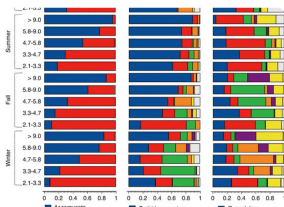


Denina Hospodsky: Thatcher et al. 2002, Nazaroff et al. 2004 shows how to estimate indoor particle emission rate from person. [#microbenet](#)

8:52 PM - May 31, 2012



[See Jessica Green's other Tweets](#)



Particle-size distributions and seasonal diversity of allergenic and pathogenic fungi...

The ISME Journal

Altmetric: 1 Citations: 79 More detail Original Article Microbial Population and Community Ecology The ISME Journal (2012) 6, 1801-1811 (2012) doi:10.1038/ismej.2012.30 Download Citation...



Jessica Green
@JessicaLeeGreen



How many people in the room know that students 15 years ago fondly referred to Bill Nazaroff as "The Naz Man"? [#microbenet](#)

8:54 PM - May 31, 2012



[See Jessica Green's other Tweets](#)



Jessica Green
@JessicaLeeGreen



Denina Hospodsky predicts the ORIGINS of airborne microbes. Lots (~20%) from human skin. I'm wondering how rooms ventilated? [#microbenet](#).

8:56 PM - May 31, 2012



[See Jessica Green's other Tweets](#)





Jessica Green
@JessicaLeeGreen



Fortunately because Hospodsky's work in PLoS I can answer my question - rooms had running HVAC
plosone.org/article/info%3... #microbenet

♡ 9:00 PM - May 31, 2012



[See Jessica Green's other Tweets](#)



Jessica Green
@JessicaLeeGreen



Hospodsky: ascomycota associated with large particles, basidiomycota with small in outdoor air.
nature.com/ismej/journal/... #microbenet

♡ 9:04 PM - May 31, 2012



[See Jessica Green's other Tweets](#)



Jessica Green
@JessicaLeeGreen



Hospodsky: pathogenocytivity higher in smaller particles. I asked why, answer = unicellular+greater ability to get deep into lungs. #microbenet

♡ 1 9:07 PM - May 31, 2012



[See Jessica Green's other Tweets](#)



Jessica Green @JessicaLeeGreen · May 31, 2012



Denina Hospodsky: particles size drives bioaerosol transport. I wonder - what else does? Surface (i.e. protein) properties? #microbenet



Jason Stajich
@hyphaltip

@JessicaLeeGreen definitely hydrophobicity of the spore surface will impact how airborne the spores will be
#microbenet

♡ 9:08 PM - May 31, 2012



[See Jason Stajich's other Tweets](#)





Patti Giglio

@psgcom



#microbenet List of attendees

here:crobiologybuiltenvironment.weebly.com/uploads/1/0/8/...

♡ 9:36 PM - May 31, 2012 · Boulder, CO



 [See Patti Giglio's other Tweets](#)



Jessica Green

@JessicaLeeGreen

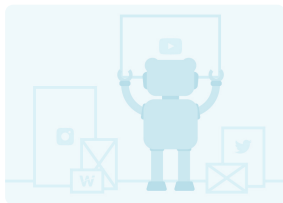


Chemist Alex Huffman portfolio.du.edu/pc/port?portfo...
is up next #microbenet

♡ 9:37 PM - May 31, 2012



 [See Jessica Green's other Tweets](#)



pc/port

portfolio.du.edu



Jonathan Eisen 

@phylogenomics



Now up at #microBEnet Alex Huffman from the
University of Denver portfolio.du.edu/pc/port?portfo...
discussing outdoor bioaerosols

♡ 9:37 PM - May 31, 2012



 [See Jonathan Eisen's other Tweets](#)



Jessica Green

@JessicaLeeGreen



Alex Huffman cares about bioaerosols because they are
ice nucleators & they impact plant and human health.
#microbenet

♡ 9:38 PM - May 31, 2012



 [See Jessica Green's other Tweets](#)





Jonathan Eisen 
@phylogenomics



Alex Huffman: some snowmaking systems use ice nucleation proteins from bacteria to aid in snow formation [#microBEnet](#)
en.wikipedia.org/wiki/Snowmaking

♡ 9:40 PM - May 31, 2012



 [See Jonathan Eisen's other Tweets](#)



Snowmaking - Wikipedia

W Wikipedia

Snowmaking is the production of snow by forcing water and pressurized air through a " snow gun," also known as a " snow cannon", on ski slopes. Snowmaking is mainly used at ski resorts...



Jessica Green
@JessicaLeeGreen



Huffman cites Heald 2009 GRL - I don't know what journal that is. Help? [#microbenet](#).

♡ 9:41 PM - May 31, 2012



 [See Jessica Green's other Tweets](#)



Jessica Green
@JessicaLeeGreen



Huffman shows interesting slide on Biological Fluorophores with reference to Pohiker AMT 2012. Please - what is AMT? [#microbenet](#)

♡ 9:42 PM - May 31, 2012



 [See Jessica Green's other Tweets](#)



Jessica Green
@JessicaLeeGreen



What I've learned here crobiologybuiltinenvironment.weebly.com/conference-pro...: write out acronyms so everyone can easily follow. [#microbenet](#)

♡ 9:44 PM - May 31, 2012



 [See Jessica Green's other Tweets](#)





Tyu_Shi
@Tyu_Shi



#microBEnet のツイートが気になって集中できない。

♡ 9:44 PM - May 31, 2012



See Tyu_Shi's other Tweets



Jessica Green
@JessicaLeeGreen



Oooh another cool toy I just learned about: Ultraviolet Aerodynamic Particle Sizer (UVAPS). Can you ID microbes with it? #microbenet

♡ 9:46 PM - May 31, 2012



See Jessica Green's other Tweets



Jessica Green
@JessicaLeeGreen



Huffman: Next journal acronym - ACP. #microbenet.

♡ 9:47 PM - May 31, 2012



See Jessica Green's other Tweets



Jonathan Eisen ✓
@phylogenomics

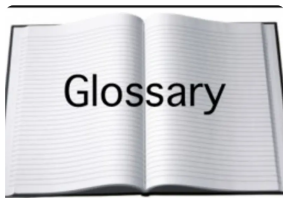


New #microBEnet blog post:: Request - terms to add to glossary for Microbiology of the Built Environment microbe.net/2012/05/31/req...

♡ 9:50 PM - May 31, 2012



See Jonathan Eisen's other Tweets



Request - terms to add to glossary for Microbiology of the Built Environment

microBEnet: the microbiology of the Built Environment network

home Resources Request - terms to add to glossary for Microbiology of the Built Environment Quick post. We are starting to build a glossary on terms and their definitions to help people...



Noah Fierer
@NoahFierer



#microbenet My new (least) favorite acronym: PBAP (primary biological aerosol particle). Why not just call it a cell/cells?

♡ 9:54 PM - May 31, 2012



[See Noah Fierer's other Tweets](#)



Jessica Green
@JessicaLeeGreen



Just found a rockin' review co-authored by Huffman on FBAPs and microbial traits atmos-meas-tech.net/5/37/2012/amt-... #microbenet

♡ 10:05 PM - May 31, 2012



[See Jessica Green's other Tweets](#)



AMT - Abstract - Autofluorescence of atmospheric bioaerosols - fluorescent...

[Atmos-meas-tech](#)

Abstract. Primary biological aerosol particles (PBAP) are an important subset of air particulate matter with a substantial contribution to the organic aerosol fraction and potentially stron...

Norm Pace



Jonathan Eisen ✓
@phylogenomics

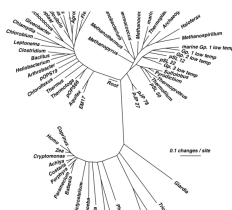


Norm Pace pacelab.colorado.edu, one of my science heroes, next up at #microBEnet - microbes in indoor aerosols & municipal drinking H2O

♡ 1 10:05 PM - May 31, 2012



[See Jonathan Eisen's other Tweets](#)



Pace Lab Home

Colorado

Designed and developed by Codify Design Studio - codifydesign.com



Jonathan Eisen 
@phylogenomics



At beginning of Norm Pace's talk the dreaded Adobe Updater pops up on the screen [#IHateAdobeUpdater](#)
[#microBEnet](#)

♡ 1 10:06 PM - May 31, 2012



 [See Jonathan Eisen's other Tweets](#)



Jessica Green
@JessicaLeeGreen



Norm Pace is up. I look forward to seeing Laura Baumgartner's NYC Subway bioaerosol paper in print - it's an awesome project. [#microbenet](#)

♡ 10:08 PM - May 31, 2012



 [See Jessica Green's other Tweets](#)



Noah Fierer
@NoahFierer



[#microbenet](#) Norm Pace: skin bacteria make it to the atmosphere via thermal convection off our bodies

♡ 1 10:10 PM - May 31, 2012



 [See Noah Fierer's other Tweets](#)



Jonathan Eisen 
@phylogenomics



Norm Pace discussing the intake and export of air from NYC Subway systems & the microbes found there
[#microBEnet](#)

♡ 10:14 PM - May 31, 2012



 [See Jonathan Eisen's other Tweets](#)



Jessica Green
@JessicaLeeGreen



Pace's finding that NYC subway/outdoor air similar reminds me of how different findings might be in green Pacific Northwest. [#microbenet](#)

♡ 10:15 PM - May 31, 2012



 [See Jessica Green's other Tweets](#)





Noah Fierer
@NoahFierer



[#microBEnet](#) I love how DAPI images look like stars.
Mini-constellations!

♡ 10:15 PM - May 31, 2012



[See Noah Fierer's other Tweets](#)



Jonathan Eisen ✓
@phylogenomics



Pace: municipal drinking water filled with microbes & misc. "junk" - he tells his students that it is just extra protein [#microBEnet](#)

♡ 10:16 PM - May 31, 2012



[See Jonathan Eisen's other Tweets](#)



Jessica Green
@JessicaLeeGreen



Pace: you are getting clean water in Boulder. Whew. Never mind drinking the \$5 water offered in Millenium Hotel. [#microbenet](#).

♡ 10:18 PM - May 31, 2012



[See Jessica Green's other Tweets](#)



Noah Fierer
@NoahFierer



[#microbenet](#) Norm Pace: Lots of mycobacteria in drinking water

♡ 10:20 PM - May 31, 2012



[See Noah Fierer's other Tweets](#)



Noah Fierer
@NoahFierer



[#microbenet](#) Pace: RV going around the U.S. sampling microbes in water. Would be cool to sample microbes off the roof while in transit.

♡ 10:22 PM - May 31, 2012



[See Noah Fierer's other Tweets](#)





Jessica Green
@JessicaLeeGreen



Pace: "we are embedding in a microbial world!"
[#microbenet](#)

♡ 10:25 PM - May 31, 2012



[See Jessica Green's other Tweets](#)



JP Maestre 🏳️‍🌈
@yeipijotape



[#microbenet](#) N. Pace: we are embedded in a microbial world, so true

♡ 1 10:25 PM - May 31, 2012



[See JP Maestre 🏳️‍🌈's other Tweets](#)



Noah Fierer
@NoahFierer



[#microbenet](#) Mitch Sogin: High temporal variability of bacterial communities in tap water.

♡ 10:33 PM - May 31, 2012



[See Noah Fierer's other Tweets](#)



Jonathan Eisen ✓
@phylogenomics



Mitch Sogin: in ocean samples they have there are more than 500,000 OTUs [#microbenet](#)

♡ 10:45 PM - May 31, 2012



[See Jonathan Eisen's other Tweets](#)



Jason Stajich
@hyphaltip



“[@cnnbrk](#): Best Western hotels rolling out UV sterilization, black light inspections on.cnn.com/JQ8aGo” interesting for [#microbenet](#) crowd

♡ 10:47 PM - May 31, 2012



[See Jason Stajich's other Tweets](#)





AMT - Abstract - Autofluorescence of atmospheric bioaerosols - fluorescent...

 Atmos-meas-tech

Abstract. Primary biological aerosol particles (PBAP) are an important subset of air particulate matter with a substantial contribution to the organic aerosol fraction and potentially stron...



Jonathan Eisen 
@phylogenomics



NOw up at [#microBEnet](#) meeting Peter Fox from RPI on Data Management rpi.edu/dept/ees/peopl...

 10:58 PM - May 31, 2012



 [See Jonathan Eisen's other Tweets](#)



RPI: Earth & Environmental Sciences: Faculty: Peter Fox

 Rpi

Fox is currently PI for the Virtual Solar-Terrestrial Observatory (VSTO), the Semantically-Enabled Scientific Data Integration, and Semantic Provenance Capture in Data Ingest Systems projects....



Jonathan Eisen 
@phylogenomics



Peter Fox's definition of data "curation" is taking something from a producer community and moving it to a consumer community [#microBEnet](#)

 11:00 PM - May 31, 2012



 [See Jonathan Eisen's other Tweets](#)



Jonathan Eisen 
@phylogenomics



Fox: says for a person w/ a messy office it is hard to find things - "There is no such thing as office grep"

[#microBEnet](#)

 11:04 PM - May 31, 2012



 [See Jonathan Eisen's other Tweets](#)





Jonathan Eisen  @phylogenomics · May 31, 2012



Fox: says for a person w/ a messy office it is hard to find things - "There is no such thing as office grep"
[#microBEnet](#)



Richard Badge
@richardbadge

LOL: office grep! RT [@phylogenomics](#) Fox: says for a person w/ a messy office... - "There is no such thing as office grep" [#microBEnet](#)

♡ 11:06 PM - May 31, 2012



 [See Richard Badge's other Tweets](#)



Jonathan Eisen  @phylogenomics



Fox: elements of Data Mgmt: creation of logical collections, physical data handling, interoperability, security, ownership [#microbenet](#)

♡ 11:09 PM - May 31, 2012



 [See Jonathan Eisen's other Tweets](#)



Jonathan Eisen  @phylogenomics



Fox: elements of data mgmt cont. metadata collection, persistence, knowledge/information discovery, dissemination & publication [#microbenet](#)

♡ 11:11 PM - May 31, 2012



 [See Jonathan Eisen's other Tweets](#)



Jonathan Eisen  @phylogenomics



Peter Fox: creation of standards are largely technical activities while adoption of standards are largely cultural activities [#microbenet](#)

♡ 1 11:19 PM - May 31, 2012



 [See Jonathan Eisen's other Tweets](#)





Jonathan Eisen 
@phylogenomics



Very very cool: Peter Fox refs the "Periodic table of visualization methods" [#microbenet](#) [visual-literacy.org/periodic_table...](#)

♡ 8 11:21 PM - May 31, 2012



 15 people are talking about this

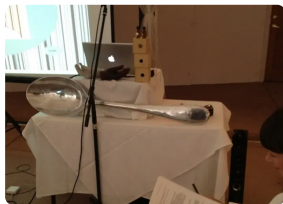


RPI: Earth & Environmental Sciences: Faculty: Peter Fox



Fox is currently PI for the Virtual Solar-Terrestrial Observatory (VSTO), the Semantically-Enabled Scientific Data Integration, and Semantic Provenance Capture in Data Ingest Systems projects...

Dinner



Preparation Y: Michelle Ellsworth - Performance art mixing dance, genomics,...



Just got back from a Sloan Foundation funded meeting in Boulder, Colorado that focused on microbiology of the built environment. More on that another time. What I want to tell you about - no -...



Mariam R. Rizkallah
@mrrizkallah



Following [#microBEnet](#) and [@phylogenomics](#) ! Nonstop paradigm shifts going on at this meeting!

♡ 2 8:08 PM - May 31, 2012



 [See Mariam R. Rizkallah's other Tweets](#)



JP Maestre 
@yeipijotape



[#microbenet](#) Awesome dinner in the Red Lion, Beautiful setting. Thanks Mark and the rest of organizers.

♡ 4:35 AM - Jun 1, 2012



 [See JP Maestre !\[\]\(d0ea58d474979ad3390c9c5a943aca8c_img.jpg\)'s other Tweets](#)





JP Maestre 🇳🇱
@yeipijotape



#microbenet For those wondering about the origin of 454 name: was the code name by which the project was referred to at CuraGen (inventors)

♡ 5:37 AM - Jun 1, 2012



See JP Maestre 🇳🇱's other Tweets



JP Maestre 🇳🇱
@yeipijotape



#microbenet Dr.Corsi (morning): 'Big change from 50s: Air conditioning in homes from 4% to 90% nowadays' How does tht impact our indoorair?

♡ 5:40 AM - Jun 1, 2012



See JP Maestre 🇳🇱's other Tweets



Jonathan Eisen ✓
@phylogenomics



Best presentation I have EVER seen at a meeting was from Michelle Ellsworth last night of Preparation Y
#microBEnet shar.es/qAIRn

♡ 3 3:00 PM - Jun 1, 2012



See Jonathan Eisen's other Tweets



Day 2



Jessica Green
@JessicaLeeGreen



Day two of the Microbiology of the Built Environment Conference
crobiologybuiltenvironment.weebly.com/index.html.
[@phylogenomics](#) is going to kick us off. #microbenet

♡ 3:15 PM - Jun 1, 2012



See Jessica Green's other Tweets



JP Maestre 🇳🇱
@yeipijotape



#microbenet Jonathan Eisen starting his talk!

♡ 3:15 PM - Jun 1, 2012



See JP Maestre 🇳🇱's other Tweets





Jessica Green
@JessicaLeeGreen



Eisen wants us all to help shape [microbe.net](#)
[#microbenet](#)


♡ 3:17 PM - Jun 1, 2012



[See Jessica Green's other Tweets](#)



microBEnet: the microbiology of the Built Environment network

 [microBEnet: the microbiology of the Built Environment network](#)

At the interface of microbial ecology and building science.



Jessica Green
@JessicaLeeGreen



I am wondering about Jonathan's choice of computer stickers. Lot's of apples. [#microbenet](#) [@phylogenomics](#)

♡ 3:19 PM - Jun 1, 2012



[See Jessica Green's other Tweets](#)



JP Maestre 🇪🇸
@yeipijotape



[#microbenet](#) "Communicate, connect, collaborate and curate" information, people, projects... J.Eisen dixit

♡ 3:20 PM - Jun 1, 2012



[See JP Maestre 🇪🇸's other Tweets](#)



Jessica Green
@JessicaLeeGreen



For the record [#microbenet](#) has a budget to fund workshops and travel.

♡ 3:21 PM - Jun 1, 2012



[See Jessica Green's other Tweets](#)





Patti Giglio
@psgcom



#microbenet @phylogenomics says social media matters. Who is watching this feed but not participating? And why not? @JessicaLeeGreen

3:24 PM - Jun 1, 2012 · Boulder, CO



[See Patti Giglio's other Tweets](#)



Jessica Green
@JessicaLeeGreen



#microbenet contributing \$ to 2012 Microbial Genomics Conference where BioBE Center student Ann Womack is presenting

phylogenomics.wordpress.com/2012/04/17/sep...

3:26 PM - Jun 1, 2012



[See Jessica Green's other Tweets](#)



Sept. 16-20, Lake Arrowhead Microbial Genomics Conference

Jonathan Eisen's Lab

This is the first announcement for the 2012 Microbial Genomics Conference, which will take place at the UCLA Conference Center, Lake Arrowhead, California, September 16-20, 2012. Ashlee Earl,...



Jessica Green
@JessicaLeeGreen

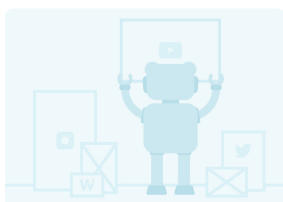


#microbenet has Mendeley collection on Microbiology of the Built Environment mendeley.com/groups/844031/...

3:29 PM - Jun 1, 2012



[See Jessica Green's other Tweets](#)



State not found Error

Elsevier



JP Maestre 🇳🇱
@yeipijotape



#microbenet "There is an enormous potential for Social Media in Science" J. Eisen

♡ 3:32 PM - Jun 1, 2012



👤 See JP Maestre 🇳🇱's other Tweets



Jessica Green
@JessicaLeeGreen

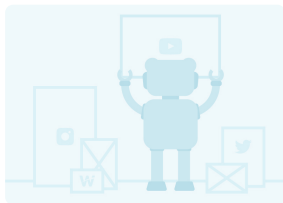


Let's use natural language processes trunorthlabs.org + Mendeley to guide standards/collaboration #microbenet @phylogenomics @ericberlow

♡ 1 3:39 PM - Jun 1, 2012



👤 See Jessica Green's other Tweets



Unknown

www.trunorthlabs.org



JP Maestre 🇳🇱
@yeipijotape



#microbenet @phylogenomics "There is no tool as twitter to know what is going on on your scientific field"

♡ 3:45 PM - Jun 1, 2012



👤 See JP Maestre 🇳🇱's other Tweets



JP Maestre 🇳🇱
@yeipijotape



#microbenet @JessicaLeeGreen "we have to come up with a policy about sharing information in our conferences"

♡ 3:54 PM - Jun 1, 2012



👤 See JP Maestre 🇳🇱's other Tweets





Jonathan Eisen 
@phylogenomics



Keith Siefert www4.agr.gc.ca/AAFC-AAC/displ... now up at
[#microBEnet](#) plugging The Secret House
amazon.com/The-Secret-Hou... [#microBEnet](#)

♡ 3:56 PM - Jun 1, 2012



 [See Jonathan Eisen's other Tweets](#)



The Secret House: The Extraordinary Science of an Ordinary Day

 Amazon

The author of $E=mc^2$ presents in accessible language a tour of an everyday home and the science surrounding it, from radio static and pillow mites to the electric fields of a light bulb and the color...



JP Maestre 
@yeipijotape



[@microbenet](#) "THE SECRET HOUSE" amazon.com/The-Secret-Hou...

♡ 3:57 PM - Jun 1, 2012



 [See JP Maestre !\[\]\(61ad86dc4c7718aafd66a7102d0584c2_img.jpg\)'s other Tweets](#)



Jessica Green
@JessicaLeeGreen



[#microbenet](#) is connected to BioBE Center's blog
biology.uoregon.edu/biobe/

♡ 3:57 PM - Jun 1, 2012



 [See Jessica Green's other Tweets](#)



BioBE

 BioBE

Written by Dr. Rich Corsi, edited by Sue Ishaq and Jeff Kline. Several months ago, I connected with Dr. Kevin van Den Wymelenberg at the University of Oregon about the interaction...



Jonathan Eisen ✓
@phylogenomics



Seifert using vacuuming to study indoor microbes -in his house find amazing things there incl. "enough hair to build a new dog" [#microBEnet](#)

♡ 2 3:58 PM - Jun 1, 2012



[See Jonathan Eisen's other Tweets](#)



Jonathan Eisen ✓
@phylogenomics



Seifert tried to get vacuumed samples from Shackleton's hut in Antarctica but couldn't get samples thru New Zealand bio rules [#microBEnet](#)

♡ 1 3:59 PM - Jun 1, 2012



[See Jonathan Eisen's other Tweets](#)



Jonathan Eisen ✓
@phylogenomics

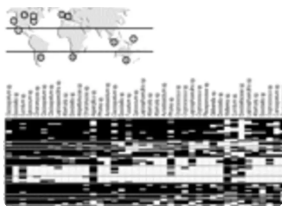


Siefert discussing some of his nice paper on 454 based sampling of indoor fungi to study biogeography [pnas.org/content/107/31...](https://www.pnas.org/content/107/31...) [#microBEnet](#)

♡ 1 4:01 PM - Jun 1, 2012



[See Jonathan Eisen's other Tweets](#)



Indoor fungal composition is geographically patterned and more diverse in temperate...

 Proceedings of the National Academy of Sciences

Fungi are ubiquitous components of indoor human environments, where most contact between humans and microbes occurs. The majority of these organisms apparently play a neutral role, but...



Jonathan Eisen ✓
@phylogenomics



Siefert did a brilliant thing: took culture-based data on fungi & converted it to a bar graph akin to rRNA surveys [#microBEnet](#)

♡ 4:02 PM - Jun 1, 2012



[See Jonathan Eisen's other Tweets](#)





Jonathan Eisen ✓
@phylogenomics

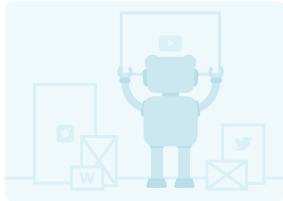


Siefert also involved in this PNAS fungal barcode of life paper pnas.org/content/early/... #microBEnet

♡ 1 4:03 PM - Jun 1, 2012



[See Jonathan Eisen's other Tweets](#)



Nuclear ribosomal internal transcribed spacer (ITS) region as a universal DNA...

 Proceedings of the National Academy of Sciences

Edited* by Daniel H. Janzen, University of Pennsylvania, Philadelphia, PA, and approved February 24, 2012 (received for review October 18, 2011) Six DNA regions were evaluated as...



Jessica Green
@JessicaLeeGreen



Keith Seifert uses "dilution to extinction" method with different media for mesophiles and xerophiles
[#microbenet](#)

♡ 4:04 PM - Jun 1, 2012



[See Jessica Green's other Tweets](#)



Noah Fierer
@NoahFierer



[#microbenet](#) Keith Siefert showing cool images of fungi from dust. In a beauty contest, fungi would definitely beat out bacteria.

♡ 4:05 PM - Jun 1, 2012



[See Noah Fierer's other Tweets](#)



Jonathan Eisen ✓
@phylogenomics



Siefert discussing how to induce dogs to sneeze by tickling them to sample airway microbes [#microBEnet](#)

♡ 4:06 PM - Jun 1, 2012



[See Jonathan Eisen's other Tweets](#)





Jessica Green
@JessicaLeeGreen



Seifert has a great idea: using dogs as sampling devices for sampling dust fungi [#microbenet](#)

♡ 4:06 PM - Jun 1, 2012



[See Jessica Green's other Tweets](#)



Jessica Green
@JessicaLeeGreen



Seifert grows specimens on wet pickling salt. [#microbenet](#)

♡ 4:07 PM - Jun 1, 2012



[See Jessica Green's other Tweets](#)



Jonathan Eisen ✓
@phylogenomics



Siefert says *Wallemia* fungi is the "domestic dog of fungi" being found in almost all homes [#microBEnet](#)

♡ 1 4:07 PM - Jun 1, 2012



[See Jonathan Eisen's other Tweets](#)



Jonathan Eisen ✓
@phylogenomics



Siefert has also repurposed phylotyping data to present it in a list like old culture based studies to compare [#microBEnet](#)

♡ 4:09 PM - Jun 1, 2012



[See Jonathan Eisen's other Tweets](#)



Jessica Green
@JessicaLeeGreen



Siefert shows awesome chart illustrating how alternative culturing "sees" fungi pyrosequencing cannot (+more than we thought). [#microbenet](#)

♡ 4:11 PM - Jun 1, 2012



[See Jessica Green's other Tweets](#)





Jonathan Eisen ✓
@phylogenomics



Siefert discussing indoor mold database
cbs.knaw.nl/indoor/ #microBEnet

♡ 4:12 PM - Jun 1, 2012



See Jonathan Eisen's other Tweets



JP Maestre 🇳🇱
@yeipijotape

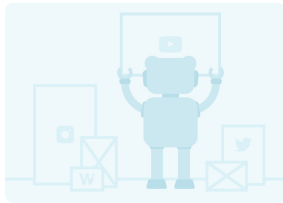


#microbenet Indoor molds database Cbs.Knaw.nl/indoor
will be linked to mobedac

♡ 4:12 PM - Jun 1, 2012



See JP Maestre 🇳🇱's other Tweets



Indoor fungi

Westerdijkinstitute



Jonathan Eisen ✓
@phylogenomics



Siefert mentioning: Course Announcement: Introduction
to Food- and Air-Borne Fungi, June 18-22 Ottawa
shar.es/qA8PO #microBEnet

♡ 4:13 PM - Jun 1, 2012



See Jonathan Eisen's other Tweets



Course Announcement: Introduction to Food- and Air-Borne Fungi, June 18-22...

microBEnet: the microbiology of the Built Environment network

home Courses Course Announcement: Introduction to Food- and
Air-Borne Fungi, June 18-22 Ottawa 18-22 June 2012, Ottawa,
Canada. We are pleased to offer our five day course for...



JP Maestre 🇺🇸
@yeipijotape

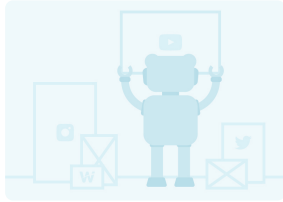


For those folks working with fungi, this may help (Keith Seifert) fungalbarcoding.org#microBEnet

♡ 4:16 PM - Jun 1, 2012



See JP Maestre 🇺🇸's other Tweets



Barcoding
Fungalbarcoding



JP Maestre 🇺🇸
@yeipijotape



[#microBEnet](https://twitter.com/yeipijotape/status/1561111111) Dogs as samplers!
(Keith Seifert)

♡ 4:17 PM - Jun 1, 2012



See JP Maestre 🇺🇸's other Tweets



Noah Fierer



Jonathan Eisen ✓
@phylogenomics



Now up at [#microBEnet](https://twitter.com/yeipijotape/status/1561111111) @NoahFierer discussing the microbial biogeography of the home colorado.edu/eeb/EEBproject...

♡ 4:44 PM - Jun 1, 2012



See Jonathan Eisen's other Tweets



NOAH FIERER
Colorado



Jonathan Eisen 
@phylogenomics



At [#microBEnet](#) @NoahFierer defining biogeography
"Why organisms live where they do"

♡ 4:45 PM - Jun 1, 2012



 [See Jonathan Eisen's other Tweets](#)



Jessica Green
@JessicaLeeGreen



Noah Fierer up now
crobiologybuiltinenvironment.weebly.com/conference-pro... on microbial biogeography of the home.
[#microbenet](#)

♡ 4:46 PM - Jun 1, 2012



 [See Jessica Green's other Tweets](#)



Jonathan Eisen 
@phylogenomics



At [#microBEnet](#) @NoahFierer - microbial biogeography studies analogous to those in plants and animals -- just different methods

♡ 4:46 PM - Jun 1, 2012



 [See Jonathan Eisen's other Tweets](#)



Jessica Green
@JessicaLeeGreen



Fierer: cataloging does play an important role in microbial ecology. [#microbenet](#)

♡ 4:47 PM - Jun 1, 2012



 [See Jessica Green's other Tweets](#)



Jessica Green
@JessicaLeeGreen



Fierer: the dominant source of microbes in the kitchen is skin. Propionibacterium and Corynebacterium
[#microbenet](#)

♡ 4:49 PM - Jun 1, 2012



 [See Jessica Green's other Tweets](#)





Jonathan Eisen 
@phylogenomics



At [#microBEnet](#) [@NoahFierer](#) discussing the "kitchen project" - studies of microbes in kitchens using rRNA sequencing w/ Illumina

♡ 4:49 PM - Jun 1, 2012



 [See Jonathan Eisen's other Tweets](#)



Jessica Green
@JessicaLeeGreen



Fierer: Erwinia common in kitchen & also common to plants. Probably come from vegetables. [#microbenet](#)

♡ 4:49 PM - Jun 1, 2012



 [See Jessica Green's other Tweets](#)



Jessica Green
@JessicaLeeGreen



[@NoahFierer](#) using source tracking to compare kitchen microbes to soil, produce & meat, human skin, human mouth, faucet water. [#microbenet](#)

♡ 4:51 PM - Jun 1, 2012



 [See Jessica Green's other Tweets](#)



Jonathan Eisen 
@phylogenomics

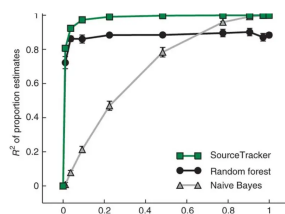


At [#microBEnet](#) [@NoahFierer](#) discussing using the Sourcetracker program to determine source/sink patterns for microbes nature.com/nmeth/journal/...

♡ 1 4:51 PM - Jun 1, 2012



 [See Jonathan Eisen's other Tweets](#)



Bayesian community-wide culture-independent microbial source tracking

Nature Methods

Altmetric: 24 Citations: 176 More detail Brief Communication Received: Accepted: Published online: We acknowledge funding from US National Institutes of Health (R01HG4872, R01HG4866,...



Jessica Green
@JessicaLeeGreen



@NoahFierer brings up interesting idea: how does lifestyle (being vegetarian, vegan, carnivore) impact indoor microbiota #microbenet

4:53 PM - Jun 1, 2012



[See Jessica Green's other Tweets](#)



Jonathan Eisen ✓
@phylogenomics



At #microBEnet @NoahFierer discussing home microbiome studies done w/ @robrdunn @DrHolly et al.

4:55 PM - Jun 1, 2012



[See Jonathan Eisen's other Tweets](#)



Dr. No @PubHealthSci · Jun 1, 2012



Replying to @phylogenomics

@phylogenomics @noahfierer This is giving me great ideas for my micro course!



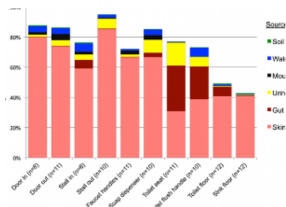
Jonathan Eisen ✓
@phylogenomics

@PubHealthSci @noahfierer actually he is talking about home microbiome now but see toilet paper here plosone.org/article/info:d... #microBEnet

4:57 PM - Jun 1, 2012



[See Jonathan Eisen's other Tweets](#)



Microbial Biogeography of Public Restroom Surfaces

Plos

We spend the majority of our lives indoors where we are constantly exposed to bacteria residing on surfaces. However, the diversity of these surface-associated communities is largely...



Jonathan Eisen 
@phylogenomics



Kudos to [@noahfierer](#) at [#microBEnet](#)
plosone.org/article/info:d... for being very clear that
determining what is a pathogen from rRNA data is hard

♡ 4:58 PM - Jun 1, 2012



[See Jonathan Eisen's other Tweets](#)



Jessica Green
@JessicaLeeGreen



[@NoahFierer](#) discusses importance of understanding
how variation in ventilation across homes impacts the
home microbiome. [#microbenet](#)

♡ 5:01 PM - Jun 1, 2012



[See Jessica Green's other Tweets](#)



JP Maestre 
@yeipijotape

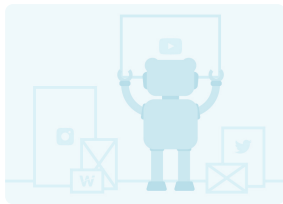


[#microbenet](#) yourwildlife.org/projects/wild-...

♡ 5:05 PM - Jun 1, 2012



[See JP Maestre !\[\]\(b58c23cb5aab1cd63092eda333892cb9_img.jpg\)'s other Tweets](#)



Unknown

 www.yourwildlife.org



Jessica Green
@JessicaLeeGreen



[@NoahFierer](#) working with [@RobRDunn](#)
yourwildlife.org/projects/wild-... [#microbenet](#)

♡ 5:05 PM - Jun 1, 2012



[See Jessica Green's other Tweets](#)





Jonathan Eisen 
@phylogenomics



Re [#microBEnet](#) [@noahfierer](#) discussing Citizen Microbiology see for more info. [#UCDCitSci](#)
[shar.es/qATwg](#)

♡ 5:07 PM - Jun 1, 2012



 [See Jonathan Eisen's other Tweets](#)



Notes on [#UCDavis](#) Citizen Microbiology Meeting [#UCDCitSci](#)

 Phylogenomics

We had a meeting at UC Davis on "Citizen Microbiology" from 1/23-1/24. It was a small meeting funded via my microBEnet project which itself is supported by a grant from the Alfred P...



Jonathan Eisen 
@phylogenomics



Overheard at [#microBEnet](#) meeting "soil is soil is soil"

♡ 5:12 PM - Jun 1, 2012



 [See Jonathan Eisen's other Tweets](#)



Jonathan Eisen 
@phylogenomics



Re "soil is soil is soil" quote O/H at [#microBEnet](#) - was a tease -- was about microbes in soil being diff. than those in buildings

♡ 5:18 PM - Jun 1, 2012



 [See Jonathan Eisen's other Tweets](#)



Laurel
@LKLuber



whew! I got a little worried... MT:[@phylogenomics](#): Re "soil is soil is soil" quote O/H at [#microBEnet](#) - was a tease

♡ 5:21 PM - Jun 1, 2012



 [See Laurel's other Tweets](#)





Jonathan Eisen ✓
@phylogenomics



Now up at [#microBEnet](#) - fungi fungi fungi

♡ 5:19 PM - Jun 1, 2012



[See Jonathan Eisen's other Tweets](#)



Jonathan Eisen ✓
@phylogenomics



At [#microBEnet](#) discussing "aerobiology" which was introduced in the 1930s by Fred Meier from USDA

♡ 5:25 PM - Jun 1, 2012



[See Jonathan Eisen's other Tweets](#)



Jonathan Eisen ✓ @phylogenomics · Jun 1, 2012



At [#microBEnet](#) discussing "aerobiology" which was introduced in the 1930s by Fred Meier from USDA



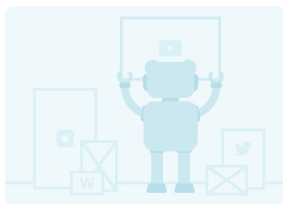
Noah Fierer
@NoahFierer

[@phylogenomics](#) [#microbenet](#) Speaking of the aerobiologist F. Meier here is a paper he wrote with THE Charles Lindbergh goo.gl/L4CpO

♡ 5:29 PM - Jun 1, 2012



[See Noah Fierer's other Tweets](#)



CiteULike: Collecting Micro-Organisms from the Arctic Atmosphere: With Field Notes an...

 Citeulike

F. C. Meier, C. A. Lindbergh. The Scientific Monthly, Vol. 40 (1935), pp. 5-20. [history outdoor_air](#)



Noah Fierer @NoahFierer · Jun 1, 2012



Replying to @phylogenomics

@phylogenomics #microbenet Speaking of the aerobiologist F. Meier here is a paper he wrote with THE Charles Lindbergh goo.gl/L4CpO



Jonathan Eisen ✓

@phylogenomics

OK @NoahFierer & #microBEnet - the fact that Charles Lindberg worked on aerobiology - that is very cool

♡ 1 5:31 PM - Jun 1, 2012



[See Jonathan Eisen's other Tweets](#)



bubba_brooks

@bmbrook



Is there a directory or some kind of Slideshare account set up for this meeting or the Sloan BE community in general? #microBEnet

♡ 5:32 PM - Jun 1, 2012



[See bubba_brooks's other Tweets](#)



bubba_brooks @bmbrook · Jun 1, 2012



Is there a directory or some kind of Slideshare account set up for this meeting or the Sloan BE community in general? #microBEnet



JP Maestre 🇳🇱

@yeipijotape

@bmbrook Good Idea! #microbenet

♡ 5:37 PM - Jun 1, 2012



[See JP Maestre 🇳🇱's other Tweets](#)



Jessica Green

@JessicaLeeGreen



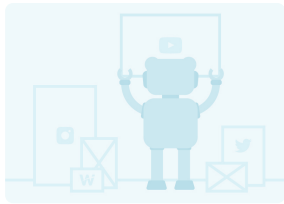
Lindsey Marr sharing how indoor environment affects influenza virus transmission airqual.cee.vt.edu #microbenet

♡ 5:48 PM - Jun 1, 2012



[See Jessica Green's other Tweets](#)





CiteULike: Collecting Micro-Organisms from the Arctic Atmosphere: With Field Notes an...

Citeulike

F. C. Meier, C. A. Lindbergh. The Scientific Monthly, Vol. 40 (1935), pp. 5-20. history outdoor_air



Jessica Green
@JessicaLeeGreen



Awesome. Marr sampling in health centers, daycare centers and airplanes. Going through security with cascade impactor complex. [#microbenet](#)

5:50 PM - Jun 1, 2012



[See Jessica Green's other Tweets](#)



Jonathan Eisen
@phylogenomics

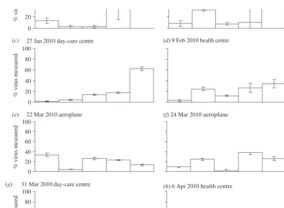


Now up at [#microBEnet](#) Linsey Marr discussing viruses indoor (e.g., see this paper rsif.royalsocietypublishing.org/content/early/...)

5:50 PM - Jun 1, 2012



[See Jonathan Eisen's other Tweets](#)



Concentrations and size distributions of airborne influenza A viruses measured...

Journal of The Royal Society Interface

The relative importance of the aerosol transmission route for influenza remains contentious. To determine the potential for influenza to spread via the aerosol route, we measured the size...



Jessica Green
@JessicaLeeGreen



Marr: droplet size varies as a function of relative humidity. [#microbenet](#)

5:52 PM - Jun 1, 2012



[See Jessica Green's other Tweets](#)





Noah Fierer
@NoahFierer



#microBEnet Linsey Marr and her studies of influenza viruses making me nervous about plane travel for the first time.

5:52 PM - Jun 1, 2012



[See Noah Fierer's other Tweets](#)



bubba_brooks @bmbrook · Jun 1, 2012



Is there a directory or some kind of Slideshare account set up for this meeting or the Sloan BE community in general?
#microBEnet



Jonathan Eisen ✓
@phylogenomics

@bmbrook we had one --
slideshare.net/group/microben... - but seems to be broken right now - not sure why

5:55 PM - Jun 1, 2012



[See Jonathan Eisen's other Tweets](#)



Jessica Green
@JessicaLeeGreen

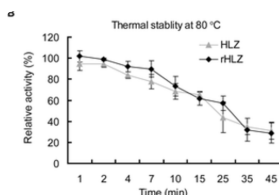


Marr shows how different removal mechanisms affect droplets of different sizes. PLoS One
plosone.org/article/info:d... #microbenet

5:57 PM - Jun 1, 2012



[See Jessica Green's other Tweets](#)



Characterization of Bioactive Recombinant Human Lysozyme Expressed in Milk of...

Plos

Background There is great potential for using transgenic technology to improve the quality of cow milk and to produce biopharmaceuticals within the mammary gland. Lysozyme, a...



Jessica Green
@JessicaLeeGreen



Yang et al. 2011 PLoS One shows how ambient humidity affects viability of virus encased in an aerosol.

[#microbenet](#)

♡ 5:59 PM - Jun 1, 2012



[See Jessica Green's other Tweets](#)



Jessica Green
@JessicaLeeGreen



Linsey Marr is a gifted speaker and superb scholar airqual.cee.vt.edu. [#ilovewomeninengineering](#)
[#microbenet](#)

♡ 2 6:02 PM - Jun 1, 2012



[See Jessica Green's other Tweets](#)



JP Maestre 🇪🇸 @yeipijotape · Jun 1, 2012



Replying to @bmbrook

[@bmbrook](#) Good Idea! [#microbenet](#)



Jonathan Eisen ✓
@phylogenomics

[@yeipijotape](#) [@bmbrook](#) we had one - trying to find out why it is dead slideshare.net/group/microben... -

♡ 6:03 PM - Jun 1, 2012



[See Jonathan Eisen's other Tweets](#)



Jessica Green
@JessicaLeeGreen



Marr: High virus viability at low RH may contribute to influenza's seasonality. [#microbenet](#)

♡ 6:03 PM - Jun 1, 2012



[See Jessica Green's other Tweets](#)





Jessica Green
@JessicaLeeGreen



Marr: humidity influences efficiency of the airborne transmission route by controlling virus viability and final aerosol size. #microbenet

♡ 6:04 PM - Jun 1, 2012



[See Jessica Green's other Tweets](#)



Jessica Green
@JessicaLeeGreen



What I wanted to ask Marr: she showed that physics & chemistry impacts virus viability. Do microbial interactions as well? #microbenet

♡ 6:08 PM - Jun 1, 2012



[See Jessica Green's other Tweets](#)



Jonathan Eisen
@phylogenomics



Nice view from #microbenet lunch

♡ 6:28 PM - Jun 1, 2012

[See Jonathan Eisen's other Tweets](#)



JP Maestre
@yeipijotape



CU stadium restaurant views #microbenet @ Stadium Club (Folsom Field) instagr.am/p/LV1zYMKiXB/

♡ 6:28 PM - Jun 1, 2012 · Boulder, CO



[See JP Maestre 's other Tweets](#)





Jonathan Eisen ✓
@phylogenomics



Next up at [#microbenet](#) Erik Kettleson on health related studies of aerosols

♡ 7:16 PM - Jun 1, 2012



[See Jonathan Eisen's other Tweets](#)



Jonathan Eisen ✓
@phylogenomics

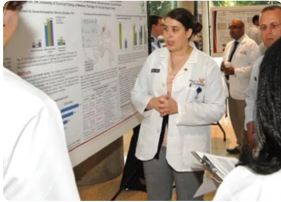


At [#microbenet](#) discussing CCAAPS study of childhood allergy and asthma ccaaps.uc.edu/webpage/ccaaps...

♡ 1 7:19 PM - Jun 1, 2012



[See Jonathan Eisen's other Tweets](#)



Cincinnati Childhood Allergy & Air Pollution Study | Environmental Health | UC Cincinn...

Uc

The University of Cincinnati, College of Medicine is conducting the Cincinnati Childhood Allergy and Air Pollution Study (CCAAPS).



Patti Giglio

@psgcom



#microbenet nice view for lunch!

♡ 7:20 PM - Jun 1, 2012 · Boulder, CO

 [See Patti Giglio's other Tweets](#)



Jonathan Eisen 

@phylogenomics



Erik Kettleson discussing a new study w/ CDC & Harvard on green buildings and bacteria #microBEnet

♡ 7:26 PM - Jun 1, 2012



 [See Jonathan Eisen's other Tweets](#)



Jessica Green

@JessicaLeeGreen



Kettleson's talk suggests indoor ecology funding sources: epa, cdc, healthy housing solution, us housing & urban development. #microBEnet"

♡ 7:36 PM - Jun 1, 2012



 [See Jessica Green's other Tweets](#)





Jonathan Eisen 
@phylogenomics



Next at [#microBEnet](#) Shibu Yooseph from JCVI -- who says "this is unpublished work" and looks at me (i.e. - don't tweet details) [#microBEnet](#)

♡ 1 7:37 PM - Jun 1, 2012



[See Jonathan Eisen's other Tweets](#)



Jonathan Eisen 
@phylogenomics

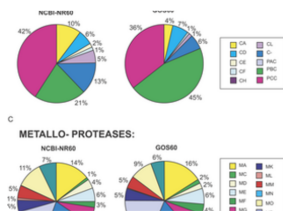


Here is a link to Yooseph's Global Ocean Sampling paper for those interested re [#microBEnet](#)
plosbiology.org/article/info%3... (note - I am coauthor)

♡ 1 7:39 PM - Jun 1, 2012



[See Jonathan Eisen's other Tweets](#)



The Sorcerer II Global Ocean Sampling Expedition: Expanding the Universe of...

 Plos

The GOS data identified 6.12 million predicted proteins covering nearly all known prokaryotic protein families, and several new families. This almost doubles the number of known proteins and...



Jessica Green
@JessicaLeeGreen



Shibu Yooseph up from jcvl using wet cyclone sampler & mda & 454. says mda gives more chimeras.
[#microBEnet](#)

♡ 7:41 PM - Jun 1, 2012



[See Jessica Green's other Tweets](#)



Jonathan Eisen 
@phylogenomics



Yooseph: many of the metagenomic reads are not classifiable into any taxonomic group [#microBEnet](#)

♡ 1 7:42 PM - Jun 1, 2012



[See Jonathan Eisen's other Tweets](#)





Jonathan Eisen 
@phylogenomics



Uh oh - Shibu Yooseph has "prokaryotic" on his slide with Norm Pace in the audience (I think) - waiting for "just say no" #microBEnet

♡ 7:46 PM - Jun 1, 2012



 [See Jonathan Eisen's other Tweets](#)



Jonathan Eisen 
@phylogenomics



Yooseph: need more reference genomes from built environment - should tell him about our undergrad. project microbe.net/2012/03/17/eve... #microBEnet


♡ 1 7:49 PM - Jun 1, 2012



 [See Jonathan Eisen's other Tweets](#)



Everyone choose a genome (reference genome sequencing as an undergrad...

 microBEnet: the microbiology of the Built Environment network

Not enough reference genomes from the built environment? Looking for ways to increase undergraduate participation in research? The marriage of these two concepts seems fairly...



Jessica Green
@JessicaLeeGreen



Yooseph looking at NYC. I'm wondering how are aerosols dispersed in wind tunnels between sky scrapers? Quick moving or stagnant #microBEnet

♡ 7:52 PM - Jun 1, 2012



 [See Jessica Green's other Tweets](#)



JP Maestre 
@yeipijotape



#microbenet Bottomline: 'Metagenomics are hard'
[@phylogenomics](#) Dixit

♡ 8:01 PM - Jun 1, 2012



 [See JP Maestre !\[\]\(c8c56c3049736ee1c2a2b5340eb11410_img.jpg\)'s other Tweets](#)





Mick Watson
@BioMickWatson



Join the club RT [@phylogenomics](#) Yooseph: many of the metagenomic reads are not classifiable into any taxonomic group [#microBEnet](#)

8:20 PM - Jun 1, 2012



[See Mick Watson's other Tweets](#)



Jonathan Eisen
@phylogenomics

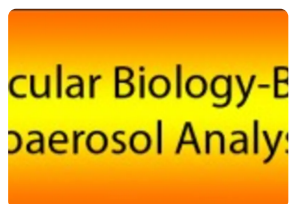


New [#microBEnet](#) blog post:: Tutorial at AAAR Oct 2012 on "Molecular Biology-Based Studies microbe.net/2012/06/01/tut...

10:47 PM - Jun 1, 2012



[See Jonathan Eisen's other Tweets](#)



Tutorial at AAAR Oct 2012 on "Molecular Biology-Based Studies

[microBEnet: the microbiology of the Built Environment network](#)

Of potential interest to [microBEnet](#) readers: Tutorials at the AAAR 31st Annual Conference - October 8-12, 2012 · Hyatt Regency Minneapolis · Minneapolis, Minnesota. includes the following...



Jonathan Eisen
@phylogenomics



New [#microBEnet](#) blog post:: 80beats at Discover story on office microbes [#microBEnet](#) [#PLoSOne](#) microbe.net/2012/06/01/80b...

11:02 PM - Jun 1, 2012



[See Jonathan Eisen's other Tweets](#)



JP Maestre
@yeipijotape



[#microbenet](#) for those wondering who Alfred P Sloan was: en.m.wikipedia.org/wiki/Alfred_P...

3:50 AM - Jun 2, 2012



[See JP Maestre 's other Tweets](#)





JP Maestre 🇺🇸
@yeipijotape



[#microbenet](#) we are wondering how the microbiome of motels is? ([@Barks](#) pub) We agree that we might not want to know...

♡ 6:10 AM - Jun 2, 2012 · Boulder, CO



 [See JP Maestre 🇺🇸's other Tweets](#)



Powered by [wakelet](#)