

San Francisco Zoo's Animal Wellness Program

Jason Watters
jasonw@sfzoo.org

Why Wellness?

Vision: Thriving Zoo Animals are key to meeting all aspects of the Zoo's Mission

SF Zoo Mission: Connect people with wildlife, inspire caring for nature and advance conservation action.

What is Wellness?

Wellness at San Francisco Zoo is an **integrative research** initiative.

We investigate how to measure and ensure **positive animal welfare**.

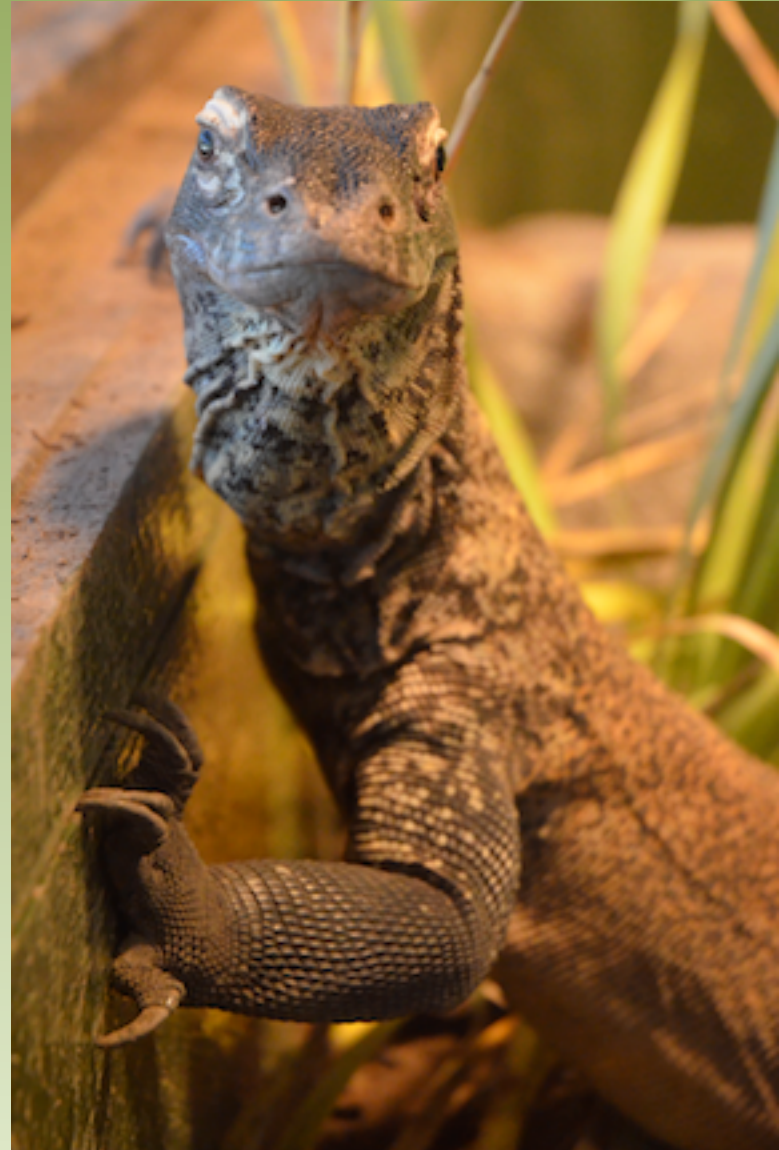
We understand that our animals and visitors together are a significant **conservation resource**.

We study how the **connection** between visitors and animals drives socially responsible actions.

We teach and share our **knowledge**.

Building a Program

- Wellness Team
- Initial Studies
 - Applied and Basic
- Center - WCC
- Outreach/Interpretation
- University and Zoo Collaborations



In-House Wellness Culture

- Wellness Team
 - Assess nominated animals
 - Make Recommendations
 - Develop Techniques
 - Teach Wellness



Wellness Center

- Classroom
- Behavior Laboratory
- Prototyping Laboratory
- Library
- Offices



Wellness Center

- Classroom
- Behavior Laboratory
- Prototyping Laboratory
- Library
- Offices



Wellness Center

- Classroom
- Behavior Laboratory
- Prototyping Laboratory
- Library
- Offices



Wellness Center

- Classroom
- Behavior Laboratory
- Prototyping Laboratory
- Library
- Offices



Wellness Center

- Classroom
- Behavior Laboratory
- Prototyping Laboratory
- Library
- Offices



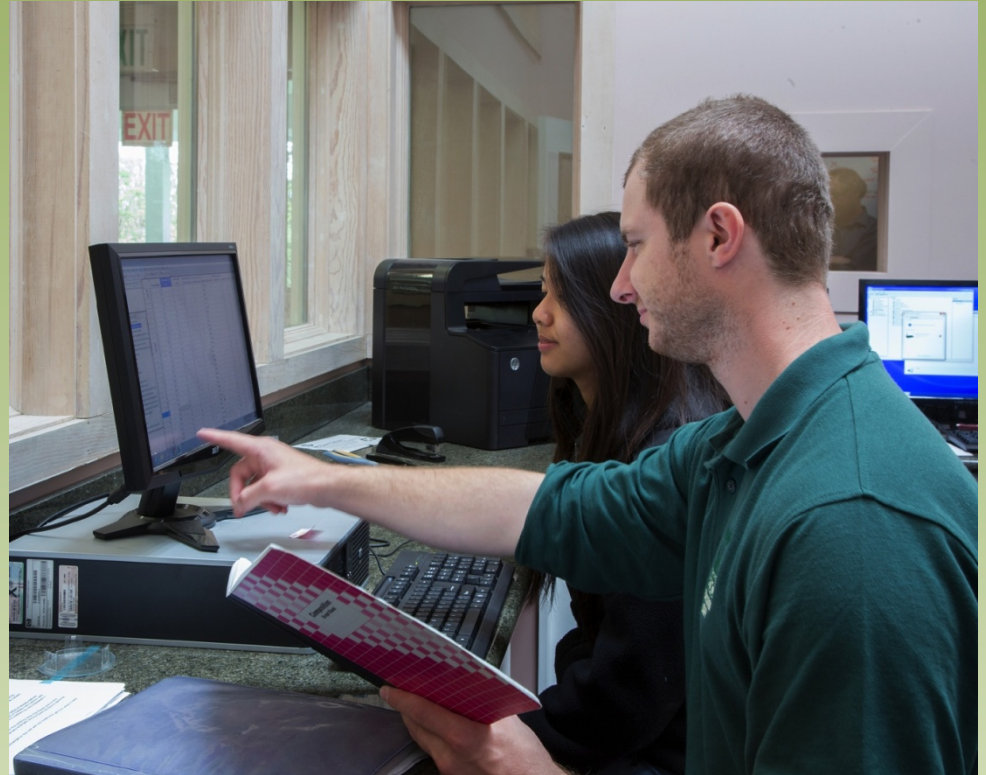
Wellness Center

- Classroom
- Behavior Laboratory
- Prototyping Laboratory
- Library
- Offices



Wellness Center

- Classroom
- Behavior Laboratory
- Prototyping Laboratory
- Library
- Offices



Wellness Center

- Classroom
- Behavior Laboratory
- Prototyping Laboratory
- Library
- Offices



Wellness Evaluations: Prioritize



- Animal staff develop priority list of animals
 - Criteria: behavioral/medical; activity; exhibit utilization; visitor perception/experience; facility

Wellness Evaluations: Data Collection

Wellness Team evaluates and collects data



Wellness Evaluations: Recommendations



Have you noticed the contraption above this enclosure?

This device stimulates the anteater to investigate its surroundings and drives natural foraging behavior. By distributing food at different times and locations, the device makes the reward less predictable. This lack of predictability encourages the anteater to be more active by stimulating it to seek information about its environment. As part of the Stanton Family Wellness Initiative, we are developing and studying methods to engage our animals' minds. This device helps us apply a concept developed by one of our scientists.



CONNECT CARE CONSERVE

A Stanton Family Wellness Project

Interpretation

**How is this relevant to what we
are doing here today?**

A couple words about selection

- How do the selection goals for animals in a given built environment relate to selection at other levels?

Captivity and Selection

- Generally selection on individuals in captivity is relaxed – “population” goals may differ
- Selection in wild can take many forms
 - Lead to phenotypic variation across populations
- Phenotypic variation can be larger in captivity than wild (McPhee 2004)



Thanks!